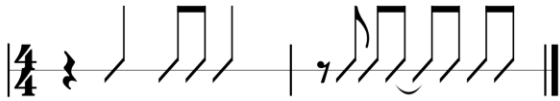


First Note B
x x x

D D6 Dmaj7 Emin7 G

Harvest Moon



| { D D6 / | Dmaj7 } | { D D6 / | Dmaj7 } | { D D6 / | Dmaj7 } | { D D6 / | Dmaj7 }

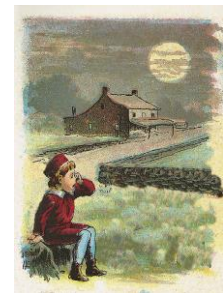
| Emin7 | Emin7 | Emin7 | Emin7
--Come a little bit closer ---Hear what I have to

A7 Asus4

| D / D6 / | Dmaj7 | { D D6 / | Dmaj7 }
Say

| Emin7 | Emin7 | Emin7 | Emin7
---Just like children sleepin' ---We could dream this night a

| D / D6 / | Dmaj7 | { D D6 / | Dmaj7 }
way



| G | G | G | G
--But there's a full moon risin' ---Let's go dancin' in the

| D / D6 / | Dmaj7 | { D D6 / | Dmaj7 }
light

| G | G | G | G
--We know where the music's playin' ----Let's go out and feel the

| D / D6 / | Dmaj7 | { D D6 / | Dmaj7 }
night

| A7sus4 | A7sus4 | A7 | A7
--Because I'm still in love with you --I want to see you dance a-

| A7sus4 | A7sus4 | A7 (hold) | N. C.
Gain Because I'm still in love with you on this harvest

All sing

¹ | D / D6 / | Dmaj7 ² | { D D6 / | Dmaj7 ³ | { D D6 / | Dmaj7 ⁴ | { D D6 / | Dmaj7 }
moon

Harvest Moon - 2

|E_{min}⁷ |E_{min}⁷ |E_{min}⁷ |E_{min}⁷
--- When we were strangers ---I watched you from a

|D / D⁶ / |D_{maj}⁷ | ♯ D D⁶ / |D_{maj}⁷
Far

|E_{min}⁷ |E_{min}⁷ |E_{min}⁷ |E_{min}⁷
---When we were lovers ---I loved you with all my

|D / D⁶ / |D_{maj}⁷ | ♯ D D⁶ / |D_{maj}⁷
Heart

|G |G |G |G
But now it's gettin' late ---And the moon is climbin'

|D / D⁶ / |D_{maj}⁷ | ♯ D D⁶ / |D_{maj}⁷
high

|G |G |G |G
---I want to celebrate ---See it shinin' in your

|D / D⁶ / |D_{maj}⁷ | ♯ D D⁶ / |D_{maj}⁷
eye



Bridge:

|A⁷_{sus4} |A⁷_{sus4} |A⁷ |A⁷
--Because I'm still in love with you --I want to see you dance a-

|A⁷_{sus4} |A⁷_{sus4} |A⁷ (hold) | N. C. **All sing**
Gain Because I'm still in love with you **on this harvest**

¹ |D / D⁶ / |D_{maj}⁷ ² | ♯ D D⁶ / |D_{maj}⁷ ³ | ♯ D D⁶ / |D_{maj}⁷ ⁴ | ♯ D D⁶ / |D_{maj}⁷
Moon

Instrumental: |E_{min}⁷ |E_{min}⁷ |E_{min}⁷ |E_{min}⁷

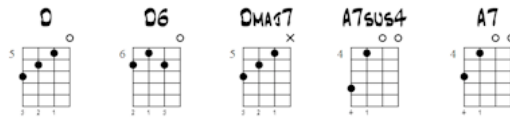
|D / D⁶ / |D_{maj}⁷ | ♯ D D⁶ / |D_{maj}⁷

|G |G |G |G |D / D⁶ / |D_{maj}⁷ | ♯ D D⁶ / |D_{maj}⁷

Play Bridge: End with D [hold one strum]

HARVEST MOON ADD ONS

MUSIC BY NEIL YOUNG



C TUNING

① = A ③ = C

② = E ④ = G

♩ = 83

HARMONICS FOR VERSES

UKUL. *mf*

NON-HARMONIC VERSION

2 BAR INTRO VAMP "UP THE NECK"

ALTERNATE CHORD VOICINGS FOR CHORUS